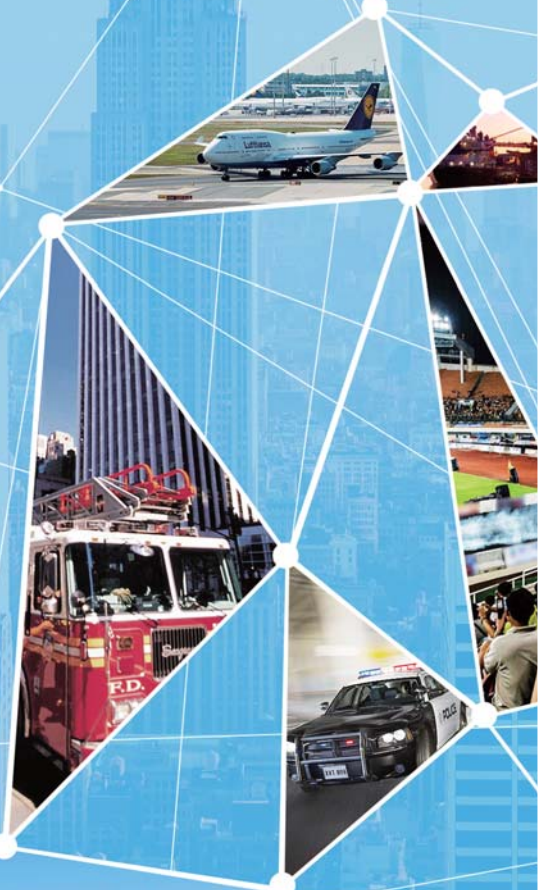




**EXCERA**  
Innovate to Succeed

## Easy Trunk

- ◆ Improve your communications efficiency and save your frequency recourse
- ◆ An efficient and cost-effective way to expand your communication system.
- ◆ Large Capacity and Easy Migration of Infrastructure



## Overview

EXCERA Easy Trunk is a cost-effective digital trunking system that delivers up to 16 times the capacity of an analog conventional mobile radio system; a more cost-effective solution that allows customers to increase the capacity. All channel resources can be shared by multiple users so that the frequency utilization is improved greatly. The system can easily migrate from Tier II DMR by applying an software upgrade license to the ER9000 repeaters and connecting them via a layer-2 switch.



## System Components

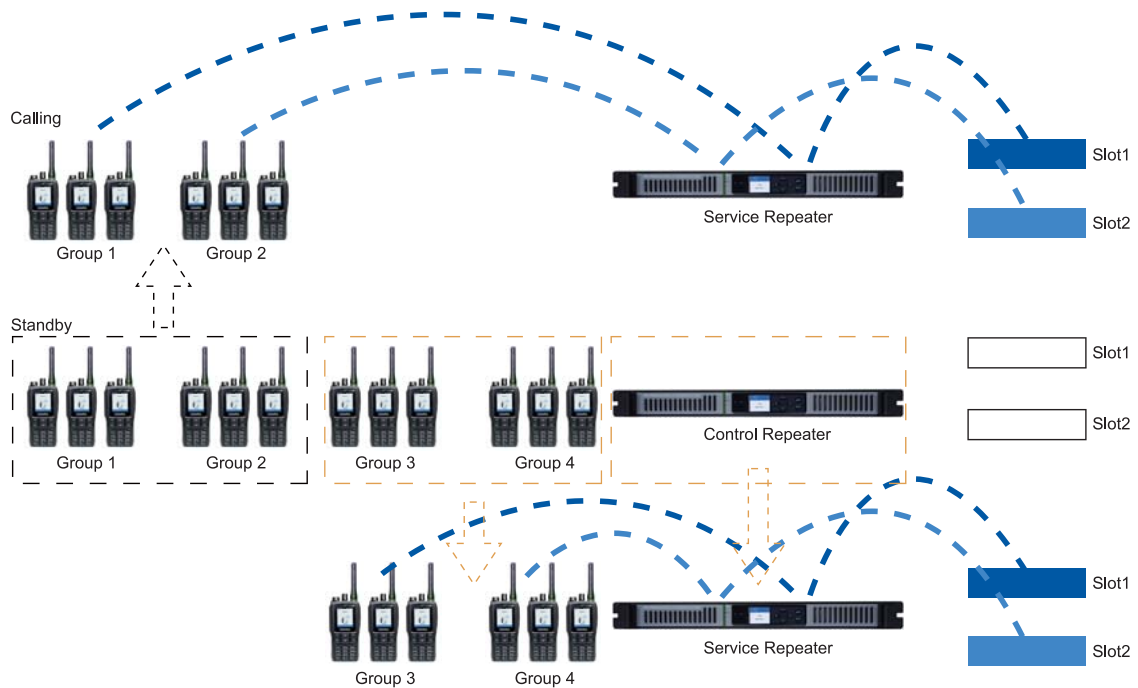
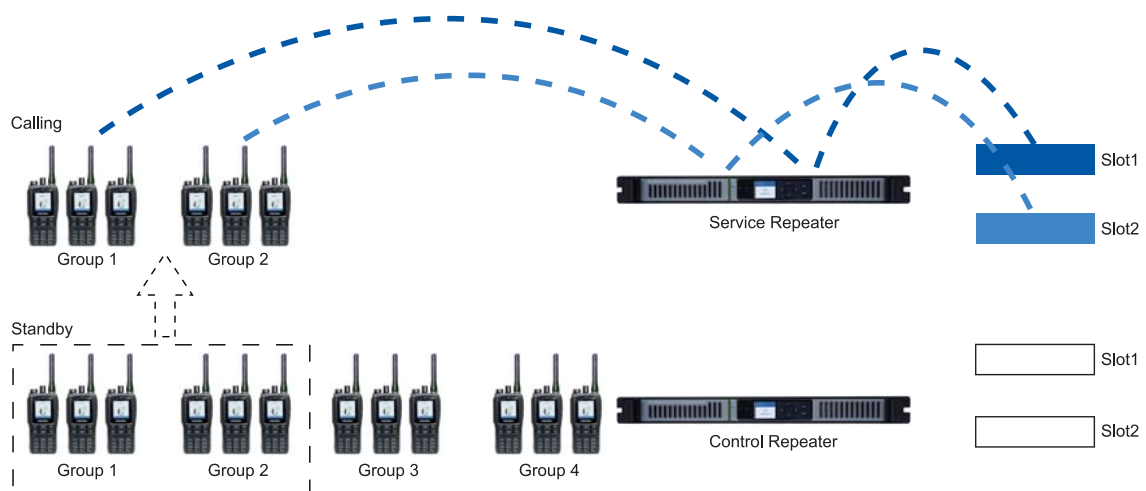


- ER9000 (at least 2 and a maximum of 8 Repeaters)
- Combiner Unit (COM)
- Divider Unit (DIU)
- Duplexer
- IP Switch
- Cabinet Unit



## Working Principle

Within the Easy Trunk system, a control repeater will be assigned for idle radios to standby. When the control repeater is idle, all service requests will be made through this repeater. The control repeater then allocates a traffic channel of the service repeater for the transmitting and receiving parties to process the related service. Once the service is done, the two parties will revert to the control repeater. When all traffic channels of the service repeaters are busy, the control repeater will choose its open time slot as the traffic channel/service repeater, the radios scan repeaters within the site for services they want. Once a channel is free, another repeater within the system will be assigned as the control repeater. In addition, the system can dynamically allocate a control repeater according to the preset policy.



## Technical Advantages

- High Channel Capacity  
Each single site Easy Trunk System supports up to 8 carriers and 16 calls simultaneously.
- Little Carrier Interference  
Dedicated control channel designed to broadcast messages among radios for little carrier interference.
- P2P and Forward Dual IP Technology Designed  
Ensures reliable communications in multi-sites Easy Trunk System.
- DMRA AIS Supported  
Easy Trunk uses the open DMRA AIS application interface to support rich applications.
- Fault Tolerance Designed  
If a repeater is down, the remaining repeaters of the Easy Trunk System will continue to operate as trunking system. If the switch is down, the radio will scan all the repeaters within the system for service it wants.

## Product Features

### Voice Services

- › Private Call
- › Group Call
- › All Call
- › Emergency Call

### Data Services

- › Text Message
- › Status Message
- › GPS
- › RRS

### Supplementary Services

- › Radio Check
- › Alert Call
- › Radio Disable
- › Radio Enable
- › Emergency Alarm
- › Remote Monitor

### Advanced Features

- › Scan
- › Encryption
- › RDAC
- › Fault Tolerance

### Dispatcher Features

- |                 |  |
|-----------------|--|
| › All Call      | ›Text Message  |
| ›Private Call   | ›Status message  |
| ›Group Call     | ›GPS   |
| ›Emergency Call | ›Supplementary Services  |
| ›Priority Call  | (Radio Check, Alert Call, Radio Disable, Radio Enable, and Remote Monitor) |
| ›Encrypt Call   |  |



SHENZHEN EXCERA TECHNOLOGY CO.,LTD.

[www.excera.com.cn](http://www.excera.com.cn)